



### Keypad Button Styles

Keypads come in two different configurations based on the needs of the user.



Flat Buttons



Toggle Buttons

### Product Description

The Ctrl+5 switch box is a device that plugs into the PG Drives R-Net system and allows for the set up of up to ten different functions into ten discrete buttons, (each toggle switch is two buttons). This device uses the Sunrise Medical patented Assignable Buttons feature. The Ctrl+5 switches are pre-programmed from the factory to default values for the actuators on the chairs. Using the Dealer PC Programmer and dongle, the button assignments can be changed to any of the Assignable Buttons functions to suit the user just like the joystick buttons.

### USB Port

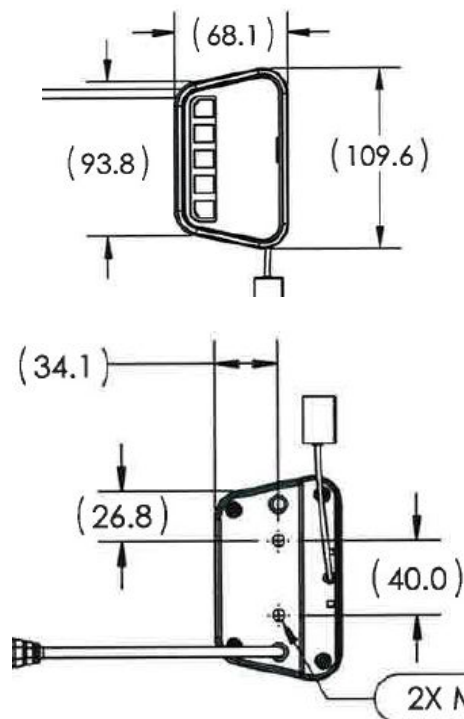
The USB port is for charging or powering peripheral devices. Current limited to 2.0 Amps. The port is also on a pigtail so it can be moved from one side to the other depending on how the user prefers to access it.



### Mounting Options

1. Arm rest mount—pictured above
2. Seat rail mount—mounts similar to seat control in automobiles
3. Back cane mount—for attendant control of powerchair peripherals.

### Dimensions (metric)



### Indicators

The behavior of the indicators is dependant on the seating module in the system.

1. With an **Intelligent Seating Module ((ISM))** the indicators will all be green or yellow.

- Yellow indicates a drive inhibit is active and green indicates there is no drive inhibit.
- All white indicators mean the module has not authenticated with the powerchair.

2. With a **Complex Seating Module (CxSM)** the indicators are linked to the button below them.

- When a button is assigned to any other option but seating, the light will be solid white.
- When a button is assigned to a seating Memory axis, and that axis is running, the light will be blinking green.
- When a button is assigned to a seating Memory axis and a drive inhibit occurs the LED will change to the drive inhibit color once the axis is stopped.
- When a button is assigned to a seating axis other than a Memory axis the drive inhibit color change will happen when the inhibit happens.
- The LED color will be Yellow for a Creep speed inhibit
- The LED color will be Red for a Lockout drive inhibit
- When a button is assigned to any seating axis and no actuator channel within that axis has called for a drive inhibit the LED color will be Green

### Compatibility

Penny and Giles R-Net

Chair must have assignable buttons features

3250 Williamsburg Lane—Missouri City, Texas 77459

1-800-376-988—713-896-1699—Fax:713-937-7197

www.switchit-inc.com

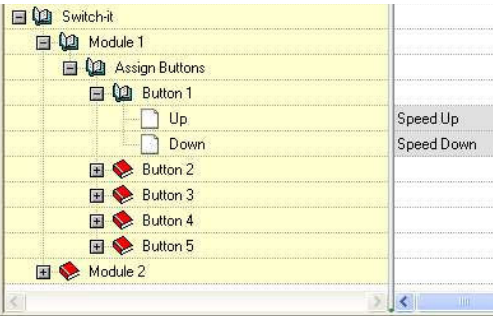
Doc: 04.2016 –CTRL+5-IGRev3

## Programming Assignable Buttons

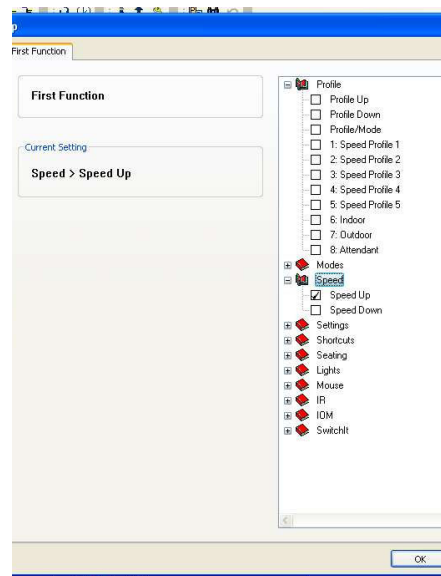
1. Connect powerchair to PC Programmer using a Programming Dongle.
2. Read Chair into the programmer by clicking on the blue down arrow in the toolbar.
3. Open the SwitchIt folder located and the module you wish to change as pictured below.



The above image shows Button 1 of module 1 is assigned to speed up and speed down.



4. To change this double click on the current assignment. In this case you would double click on the "Speed Up" text. This brings up the window below.
5. Now select the function you need that button to do by clicking the checkbox, then click OK.



6. Continue this process until all buttons have the desired functionality.
7. Now click the upload button pictured to the left.
8. Now power cycle the chair. Your new assignable button assignments are now updated.



## Ctrl+5

### Instructions for Use

#### Dual Modules

The system has the capability of having two Ctrl+5s on the same chair. As a default all modules are module 1 when they are first powered on. The process to change a module from a module 1 to a module 2 is to simply pressing the buttons circled in white in the picture below.

Change to a Module 2



Change back to a module 1



#### Troubleshooting

- Powerchair hourglass shows on display and does not go away.
  - Unplug Ctrl+5 and turn chair off.
  - Plug Ctrl+5 back in and turn chair on.
- New assignments are not loading on the device.
  - Power cycle the chair and test
  - Ensure Sunrise Personality is loaded into the chair
  - Use most current Dealer version of PC Programmer

#### Revisions—label on bottom of device

Rev 3.5, 3.6, 3.7, 3.9

- Does not have dual module functionality
- Will not work with CxSM
- New assignable buttons parameters will not update if Rnet PC programmer is plugged in.

Rev 4.0

- Does have dual module functionality
- Will work with CxSM
- New assignable buttons parameters will update with PC Programmer plugged in.

## ⚠ WARNING

WARRANTY -1 year from the date of manufacture

DISCLAIMER Avoid use under power lines and around cellular phones.

Caution should be exercised with regards to the use of portable communications equipment in the area around where the sensors are located in the head array. If the wheelchair behaves erratically, shut the wheelchair off immediately and contact the dealer.

Ensure wheelchair is powered off when in a vehicle or during a patient transfer.

Ensure wheelchair is powered off when plugging or unplugging items from the USB port.