

## Handset HB40

The HB40 series handsets are designed for use with LINAK<sup>®</sup> control boxes.

These sturdy compact units are ergonomically designed and ideal for a vast range of applications from patient care beds and office furniture to industrial and agricultural duties.

### Features and Options:

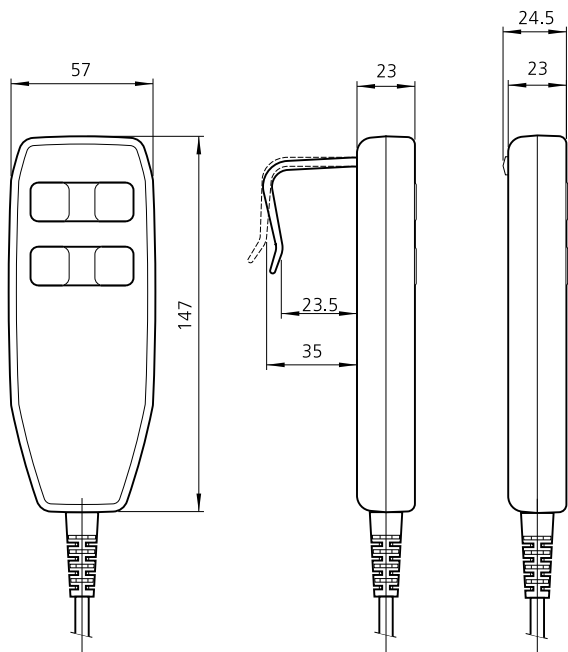
- Handset for up to 4 actuators
- Only control current, max. 100 mA per channel in the handset
- High-strength plastic housing
- Ergonomic design and easy-touch buttons
- Hook for easy placement
- 2.5 m straight cable
- Protection class: IPX1. (HB44H for CARELINE IPX4) IPX5 or IPX6 (Not HB40A)
- Colour: black
- 0.5 m/0.6 m coiled cable or with extra long cable
- Customised front cover
- Anti-slip rubber tip for placement on a flat surface (special article)
- Colour: grey

### Usage:

- Ambient temperature: +5° to +40° C
- HB40 is compatible with CB8-T, CB9..AX (not CH.4) and CB12 (not CH.4)
- HB40A is compatible with CB8-A battery version. Fitted with plug for battery charger CH01.
- HB40E is compatible with CB9Px (except CB9..PM/PN) and CB14
- HB44H is only compatible with CB9..Ax and CB12 (if CH.4) 4 channels
- HB40T is only compatible with CB7 (max. 2 channels)



Dimensions:



Compatibility:

	CB7	CB8	CB8A	CB9..Ax	CB9..Px (not CB9..PM/PN)	CB12	CB14
HB4xO		x		x*		x*	
HB4xA			x				
HB4xE					x		x
HB4xH				x (4ch.)		x (4ch.)	
HB4xT	x						

\* only for channels 1, 2 and 3

HB40

Ordering example:

H

B

4

1

0

0

0

-

0

0

0

0

0

0

Cable:

IP - rating:

Colour:

Front cover no:

Special code:

Functionality:

No. of rows:

0 = 2500 mm, 9-Wire straight, 8 p. DIN plug  
1 = 600 mm, 9-Wire coiled, 8-p. DIN plug (HB43 and HB44)  
2 = 500 mm, 6-Wire coiled, 8-p. DIN plug (only HB41x, HB42x and HB43E)  
3 = 500 mm, 6-Wire coiled, without plug (only HB41 and HB42)  
4 = 500 mm, 4-Wire coiled, 4p. Modular plug (only HB41)  
5 = 600 mm, 9-Wire coiled, 8p. DIN, extra long straight end  
9 = 600 mm, extra long straight end, 5-Wire coiled, 8p. Modular plug. (only CB7)

0 = IPX1  
1 = IPX5  
2 = IPX6-Washable  
4 = IPX4  
  
HB4xA: always IP X1

0 = Black  
1 = Grey

Customer designed front cover

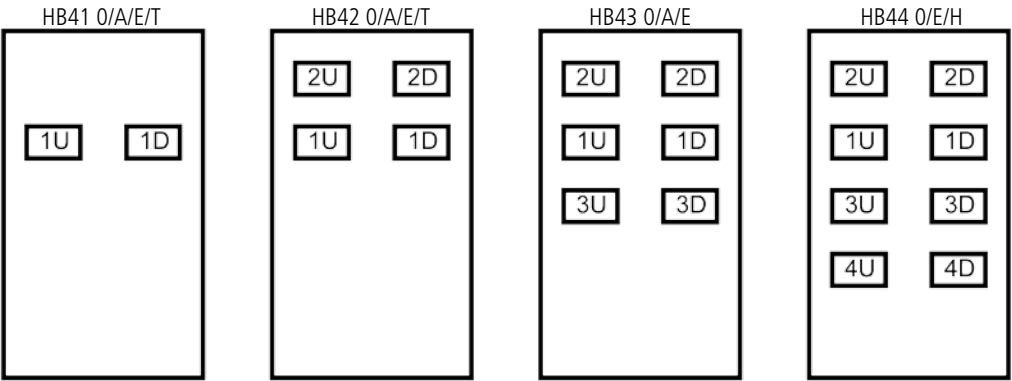
if not 00

0 = HB40-like, if used with CB9-Ax and CB12 4 channels use functionality H.  
A = For use with CB8-A, (only HB41/42/43)  
E = Matrix for use with CB14, CB9..Px (not CB9..PM/PN)  
H = For use with CB9-Ax and CB12 4 channels  
T = For use with CB7 (only HB41/42)

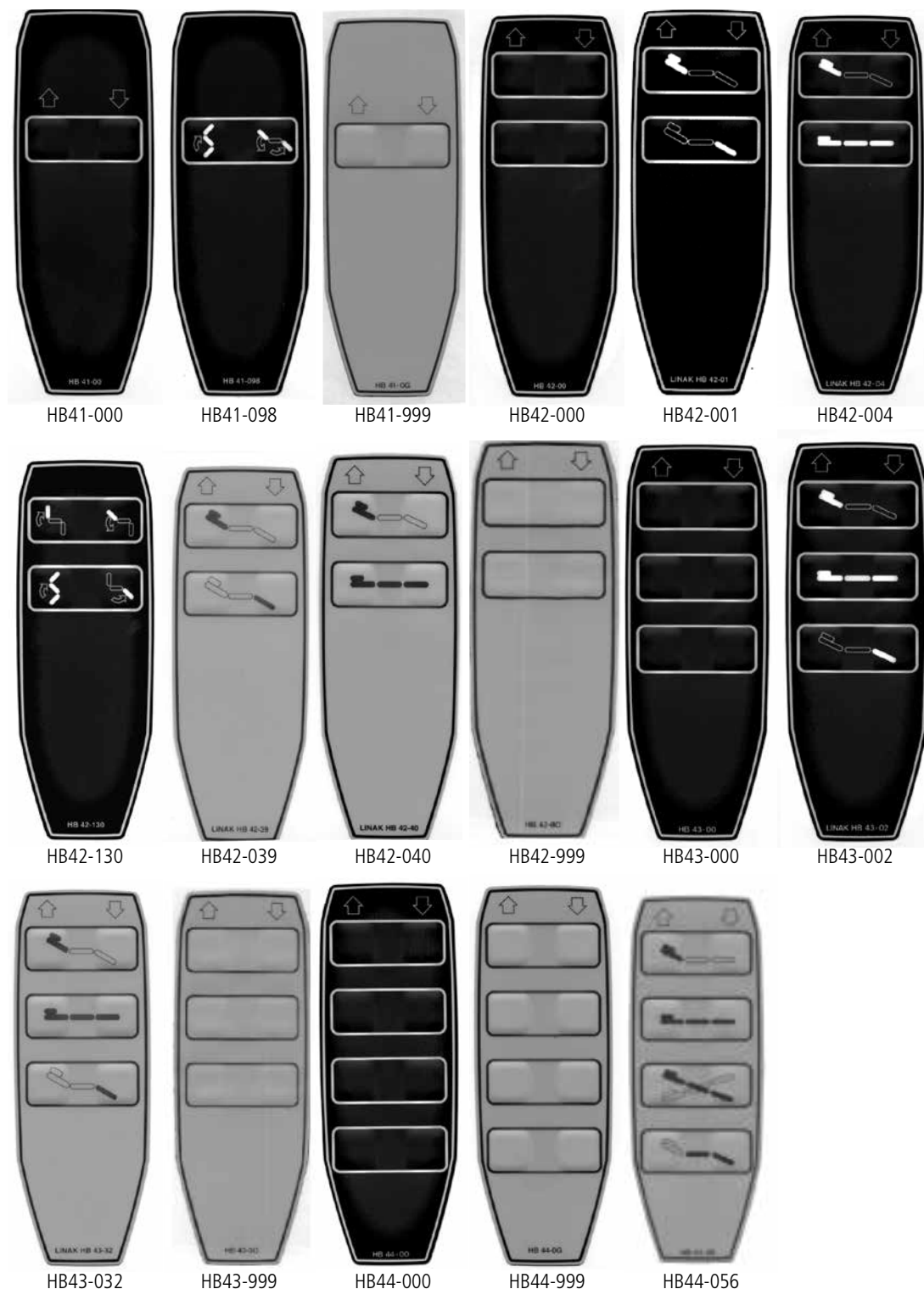
1 - 4

Black	Grey
0015751	0015752
0015761	0015762
00914517	00914518
0015763	0015764
0015114	
0015119	0015150
0015766	0015767
0015422	

Overview for HB4x functionality: 0, A, E, H, T



## HB40 Standard front covers:



When ordering check that the handset functionality corresponds to the symbols on the front cover.  
The last 2 digits in the front cover code are to be used in the ordering example (xx).

### Terms of use

The user is responsible for determining the suitability of LINAK products for specific application. LINAK takes great care in providing accurate and up-to-date information on its products.  
However, due to continuous development in order to improve its products, LINAK products are subject to frequent modifications and changes without prior notice. Therefore, LINAK cannot guarantee the correct and actual status of said information on its products.  
While LINAK uses its best efforts to fulfil orders, LINAK cannot, for the same reasons as mentioned above, guarantee the availability of any particular product. Therefore, LINAK reserves the right to discontinue the sale of any product displayed on its website or listed in its catalogues or other written material drawn up by LINAK.  
All sales are subject to the Standard Terms of Sale and Delivery for LINAK. For a copy hereof, please contact LINAK.